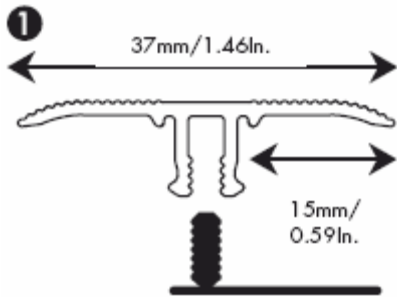
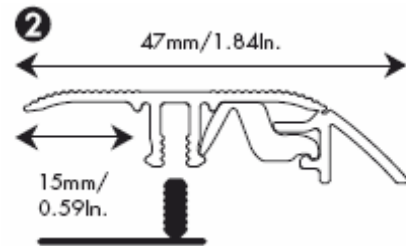


The metal profile with Incizo® technology offers an easy solution for the perfect finishing of your floor. You can use the profile in 4 ways: as an expansion profile/T-molding, an adaptor profile/reducer, an end profile/square nose or a carpet transition strip.



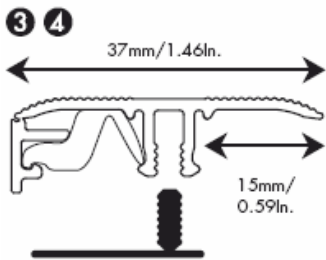
1. EXPANSION PROFILE/T-MOLDING

The expansion profile/T-molding is used to connect two floors on landings, door openings, in L-shaped rooms or in rooms where the length or width of the floor is greater than 12 running meters / 40 ft.



2. ADAPTOR PROFILE/REDUCER

The adaptor profile/reducer is used to make the transition between a floor and another type of floor covering that is lower, such as tiles, vinyl or hardwood floor.

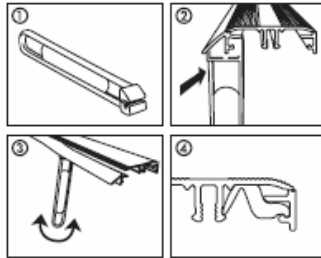


3. - 4. END PROFILE/SQUARE NOSE

The end profile/square nose is used to finish the edge of a floor against a vertical surface such as sliding doors, low open windows, or a threshold or tile floor located a bit higher than the floor. The end profile/square nose can also be used to make the transition to fitted carpet.

WHY AN EXPANSION GAP?

This floor is primarily made of wood. Because the humidity level in the room can vary, for example between summer and winter, it is necessary that the floor has room to expand and contract along all sides. This is why an expansion gap of at least 8-12 mm / 5/16" — 7/16" is needed around the perimeter of the floor. To finish this gap, we offer a wide variety of skirting / wall base and profiles. Skirting / wall base is used to finish the floor against a wall, profiles for finishing in other situations (see below).



THE HANDLE (see illustration 1)

The handle can be used very simply to remove one or two pieces of the profile to obtain an adaptor, edge or expansion profile. Place the handle on the profile (see illustration 2).

Make an up-and-down movement with the handle (see illustration 3); do this whilst you slide it over the length of the profile in a smooth movement.

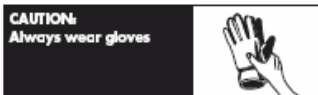
Take off the piece to be removed.

THE REINFORCEMENT PIECE (see illustration 4)

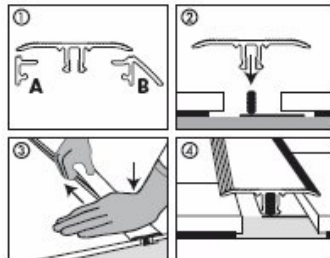
Simply click the reinforcement piece into the remaining section of the profile. This will give your profile extra strength.

To work quickly, turn the profile around on a stable subfloor. Lay the reinforcement piece in the correct position on the profile and click into place. Gradually press from one side of the profile to the other.

The reinforcement piece must always be used with an adaptor profile, transition profile and end profile.



EXPANSION PROFILE/T-MOLDING



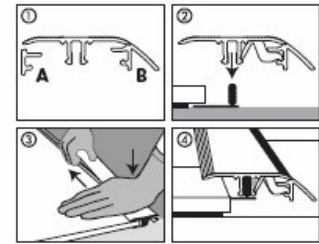
First cut the profile to the right length. Using the handle, remove part A and part B to obtain an expansion profile.

While installing the floor, be sure to allow sufficient gap between the two surfaces to be joined by the profile.

Cut the rail to the right length and place it in the middle of the gap between the two floor surfaces.

You can easily attach the rail with glue. If you wish, you can also choose to use screws. Gently press the profile from one side of the rail to the other. Press against the floor.

ADAPTOR PROFILE/REDUCER



First cut the profile to the right length. Using the handle, remove part A to obtain an adaptor profile.

Cut the reinforcement piece to the right length.

Turn the profile around on a stable subfloor. Lay the reinforcement piece in the correct position on the profile and click into place. Mark the ground to indicate how far the edge of the flooring will extend. Allow the underlay to extend until just before that line: It is best to place the rail (on which the adaptor profile will be clamped) later on top of the subfloor.

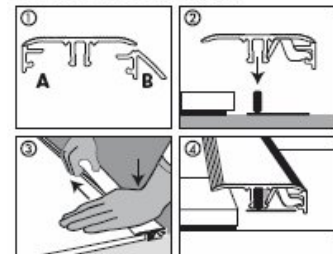
Be sure that there is enough distance between your flooring and the edge of the underlay (it is very important that the expansion gap is sufficient).

Fix the rail to the subfloor, with the long lip in the direction of the floor.

You can easily attach the rail with glue. If you wish, you can also choose to use screws.

Gently press the profile into the rail from one side to the other. Press against the floor.

END PROFILE/SQUARE NOSE



First cut the profile to the right length. Using the handle, remove part B to obtain an end profile.

Cut the reinforcement piece to the right length.

Turn the profile around on a stable subfloor. Lay the reinforcement piece in the correct position on the profile and click into place. Installing against a vertical surface: Cut the plastic rail to the correct length and fit it with the long lip in the direction of the vertical surface.

Position the rail with the aid of the profile.

You can easily attach the rail with glue. If you wish, you can also choose to use screws.

Gently press the profile into the rail from one side to the other. Press against the floor.

Installing against a horizontal surface: Identical to installing an adaptor profile.